

Mapping for Deep Array 128-Channel Probe

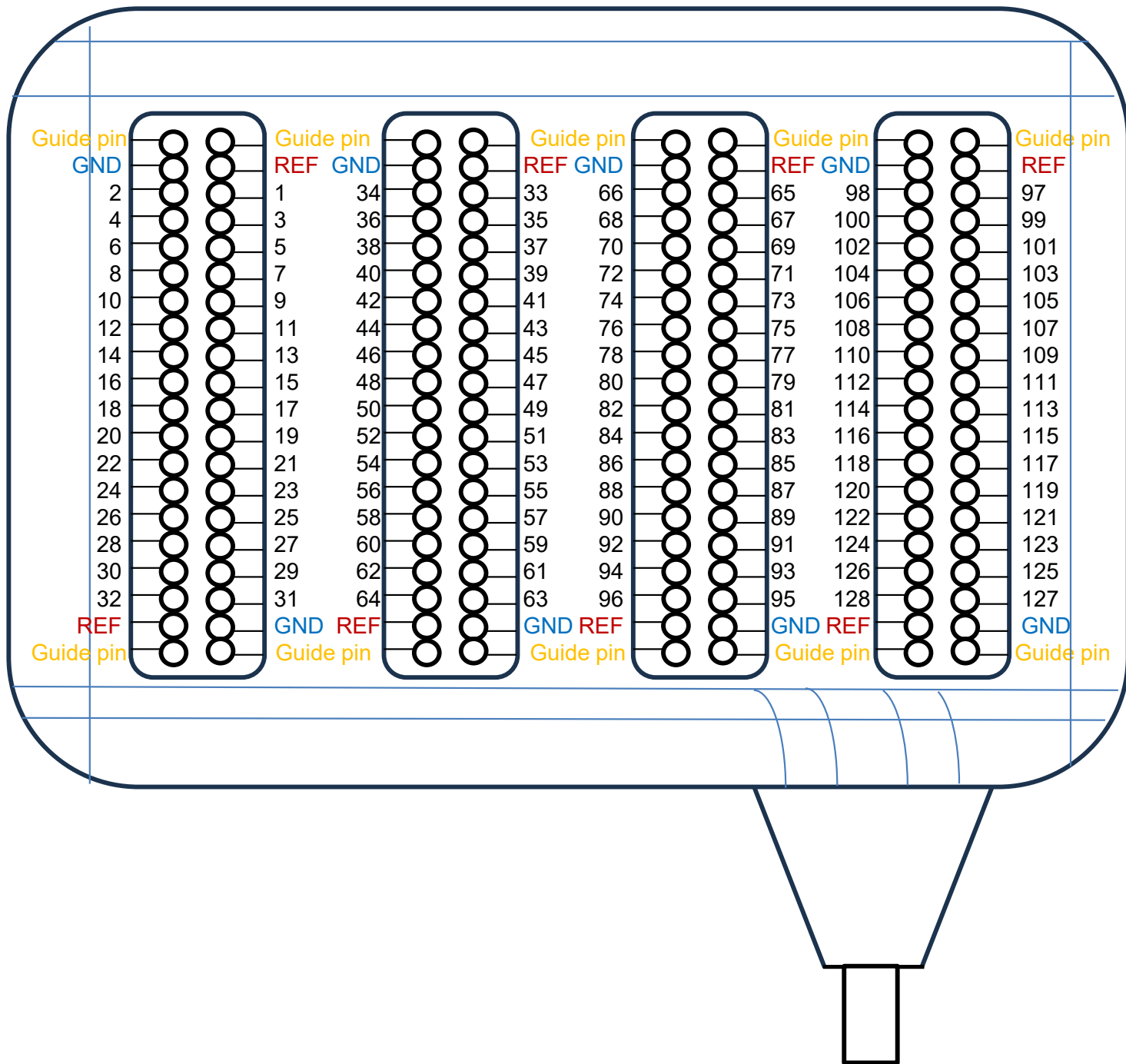
4x Omnetics 36-pin

DA 128-2 Passive



CAMBRIDGE NeuroTech

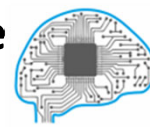
Advanced Electrophysiology Systems



Mapping for Deep Array 128-Channel Probe

4x Omnetics 36-pin

DA 128-2 Passive



CAMBRIDGE
NeuroTech

Advanced Electrophysiology Systems

Electrode numbers are 0-indexed so as to correspond to the Intan / Open Ephys data-acquisition software channels.

See page 1 for connector pinout

